

# TDS TECHNICAL DATA SHEET

**EARTH**  
Recess Down light



## Description:

Indoor recessed mounting Circular Down light with aluminium anodized specular finish faceted main reflector and turbo cross suitable for horizontally mounted single / twin 26 W CFL Lamp louver optics.



## Technical Specification:

**Housing** : Pre-treated CRCA MS with epoxy powder coated finish.

**Reflector** : Aluminium anodized specular finish faceted main reflector and turbo cross louvre optics.

**Mounting Clips** : 2 nos. spring loaded clamps for positioning in false ceiling.

**Gear Tray** : Pre-treated CRCA MS with epoxy powder coated finish.

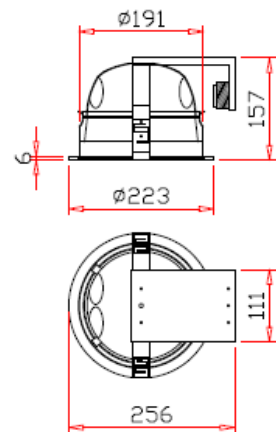
**Internal Wiring**: PVC insulated single strand copper conductor.

**Mains Terminal**: 10 amps. suitable for terminating 2.5 sq.mm. conductor.

**Hardware**: M.S.; Zinc plated & passivated.

**Earthing**: 1 No. inside, suitable for 2.5 sq. mm. conductor.

**Ballast**: Option available for both Electro Magnetic Ballast (EMB) & Electronic Ballast (EB).



Cut Out Dia. 215 mm.

Nominal Dimensions in mm, Tolerance +/-2 mm

## Range:

CAT.REF:	Lamp	Voltage	Ballast	Capacitor	Mains current	Power factor	Approx Wt.(Kg)
SDLHR 126 CF TR	1x26 CFL	240V	EMB	NA	0.32 A	>0.50	1.60
SDLHR 126 CF TR EB1/P3	1x26 CFL	240V	EB	NA	0.12 A	>0.90	0.93
SDLHR 226 CF TR	2x26 CFL	240V	EMB	NA	0.64 A	>0.50	1.60
SDLHR 226 CF TR EB1/P3	2x26 CFL	240V	EB	NA	0.23 A	>0.90	0.93

## Installation:

- Suitable for cut out Dia. 215 mm in ceiling.
- Three nos. spring steel clips provided for mounting in ceiling.

## Application:

Offices, Hotels, Software parks, Hospitals  
Conference rooms etc.



DRAWN PB-SM DRG.NO : TD 03-006-B

CHECKED SN REV. NO: 1

APPROVED SC DATE: 27-03-2009

Luminaire Business Group

Surya Roshni Ltd, Padma Tower-I, Rajendra Place, New Delhi-110008

As improvement in design & method of manufacturing is a continuous process, the product supplied may differ in detail from the data given here.