

TDS TECHNICAL DATA SHEET

NEPTUNE
Recess Down light



Description:

Indoor recessed mounting Circular Down light with aluminium anodized specular finish rear reflector and frosted glass cover suitable for horizontally mounted single or twin 13W / 18W CFL Lamp.



Technical Specification:

Frame: Pretreated CRCA MS with epoxy powder coated finish.

Reflector : Aluminium anodized specular finish rear reflector and frosted glass cover.

Mounting Clips : 3 nos. spring steel retaining clips for positioning in false ceiling.

Internal Wiring: PVC insulated single strand copper conductor.

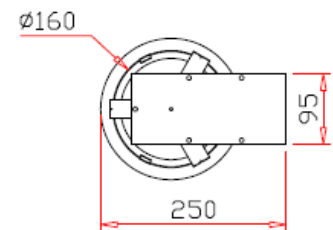
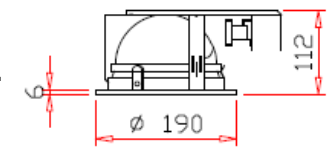
Gear Tray : Pre-treated CRCA MS with epoxy powder coated finish.

Mains Terminal: 10 amps. suitable for terminating 2.5 sq.mm. conductor.

Hardware: M.S., Zinc plated & passivated.

Earthing: 1 No. inside, suitable for 2.5 sq. mm. conductor.

Ballast: Option available for both Electro Magnetic Ballast (EMB) & Electronic Ballast (EB).



Cut Out Dia. 170 mm.

Nominal Dimensions in mm, Tolerance +/- 2 mm

Range:

| CAT.REF: | Lamp | Voltage | Ballast | Capacitor | Mains current | Power factor | Approx Wt (Kg) |
|------------------------|----------|---------|---------|-----------|---------------|--------------|----------------|
| SDLHR 118 CF FG | 1x18 CFL | 240V | EMB | NA | 0.22 A | >0.50 | 1.07 |
| SDLHR 118 CF FG EB1/P0 | 1x18 CFL | 240V | EB | NA | 0.09 A | >0.90 | 0.83 |
| SDLHR 213 CF FG | 2x13 CFL | 240V | EMB | NA | 0.34 A | >0.50 | 1.37 |
| SDLHR 213 CF FG EB2/P0 | 2x13 CFL | 240V | EB | NA | 0.13 A | >0.90 | 0.88 |
| SDLHR 218 CF FG | 2x18 CFL | 240V | EMB | NA | 0.44 A | >0.50 | 1.37 |
| SDLHR 218 CF FG EB2/P0 | 2x18 CFL | 240V | EB | NA | 0.18 A | >0.90 | 0.88 |

Installation:

- Suitable for cut out Dia. 170 mm in ceiling.
- Three nos. spring steel retaining clips provided for mounting in ceiling.

Application:

Offices, Hotels, Software parks, Hospitals
Conference rooms etc.



DRAWN PB-SM DRG.NO : TD 03-003

CHECKED SN REV. NO: 1

APPROVED SC DATE: 27.03.2009

Luminaire Business Group

Surya Roshni Ltd, Padma Tower-I, Rajendra Place, New Delhi-110008

As improvement in design & method of manufacturing is a continuous process, the product supplied may differ in detail from given here.