

TDS TECHNICAL DATA SHEET

VENUS
Recess Down light



Description:

Indoor recessed mounting Circular Down light with electro chemically brightened Polycarbonate reflector suitable for horizontally mounted single /twin 13/18 W CFL Lamp.



Technical Specification:

Frame: Pretreated CRCA MS with epoxy powder coated finish.

Reflector : Electro chemically brightened Polycarbonate with finishing combination of diamond at the bottom, and matt finish at the top for higher light output & distinct look.

Mounting Clamps : 2 nos. spring loaded clamps for positioning in false ceiling.

Internal Wiring: PVC insulated single strand copper conductor.

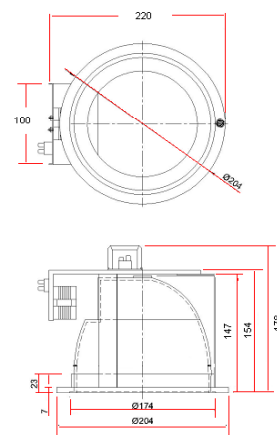
Gear Tray : Pre-treated CRCA MS with epoxy powder coated finish.

Mains Terminal: 10 amps. suitable for terminating 2.5 sq.mm. conductor.

Hardware: MS, Zinc plated & passivated.

Earthing: 1 No. inside, suitable for 2.5 sq. mm. conductor.

Ballast: Option available for both Electro Magnetic Ballast (EMB) & Electronic Ballast (EB).



Cut Out Dia. 180 mm

Nominal Dimensions in mm, Tolerance +/-2 mm

Range:

CAT.REF:	Lamp	Voltage	Ballast	Capacitor	Mains current	Power factor	Approx Wt (Kg).
SDLHR 113 CF SF GF	1x13 CFL	240V	EMB	NA	0.170 A	>0.50	0.97
SDLHR 113 CF SF GF EB1/P0	1x13 CFL	240V	EB	NA	0.065 A	>0.90	0.58
SDLHR 118 CF SF GF	1x18 CFL	240V	EMB	NA	0.220 A	>0.50	0.97
SDLHR 118 CF SF GF EB1/P0	1x18 CFL	240V	EB	NA	0.090 A	>0.90	0.58
SDLHR 213 CF SF GF	2x13 CFL	240V	EMB	NA	0.340 A	>0.50	0.97
SDLHR 213 CF SF GF EB2/P0	2x13 CFL	240V	EB	NA	0.130 A	>0.90	0.58
SDLHR 218 CF SF GF	2x18 CFL	240V	EMB	NA	0.440 A	>0.50	1.27
SDLHR 218 CF SF GF EB2/P0	2x18 CFL	240V	EB	NA	0.180 A	>0.90	0.63

Installation:

- Suitable for cut out Dia. 180 mm in ceiling.
- Two nos. spring loaded clamps provided for mounting in Conference rooms etc.

Application:

Offices, Hotels, Software parks, Hospitals



DRAWN	SM	DRG.NO :	TD 03-008
CHECKED	SM	REV. NO:	1
APPROVED	SC	DATE:	19.01.2009

Luminaire Business Group

Surya Roshni Ltd, Padma Tower-I, Rajendra Place, New Delhi-110008

As improvement in design & method of manufacturing is a continuous process, the product supplied may differ in detail the data given here.